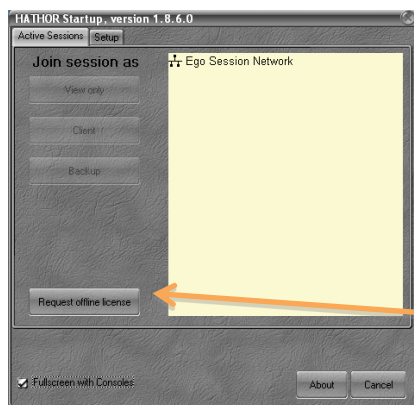


OFFLINE EDITOR FOR HATHOR SOFTWARE

HOW TO INSTALL THE OFFLINE EDITOR:

STEP 1

- First download the latest released version of the HATHOR software from our website: The setup file is named Prego-X.X.X.X.exe.(X are digits for version number). Copy the installer on to your computer and then run the software following any screen messages. Confirm Shortcut creation while installing.
- Software downloads from: http://www.adblighting.com/?page=downloadfiles&cat_id=24
- Click on the PREGO shortcut (desktop)
- When the software has started you will find a window on your screen. Press Keys [CTRL] + [ALT] at the same time left clicking your mouse on the text: “Join session as” – you will then receive a popup with a serial number. Copy this 16 digit serial number to an email message.



1: Click Yes to copy to your clipboard and insert Key Number in an email.

STEP 2

To obtain your software key, which allows installing the offline version please contact either: gilles.govaerts@adblighting.com or Sascha.sahakoglu@adblighting.com.

In your email please mention the following information:

- Name:
- Company:
- Adress / Country:
- Email Address:
- When and where did you follow the training session:
- The WINDOWS operating system you are using and system information about the computer you are using:
- The HATHOR software version you have downloaded:
- The Serial Number you have copied from the procedure mentioned above:

A short time after you have sent your email you will receive a small file XXXXXXXXXXXX_offline.san back from ADB in an email. This file shall be copied in the folder from where you run the HATHOR / PREGO software. e.g. C:\Program Files\Prego. – You may now run the offline software and use all the functions available.

IMPORTANT: the Offline software that you will receive from ADB Lighting is linked to the computer in which you did install the original PREGO software and generate the code. You won't be able to install this Offline software on another computer. If requested, follow the same routine for the second computer, and send us a second code.

STEP 3

When you installed the software a shortcut icon was installed on your desktop and also in the programs short cut. As a first step you will need to right-click with your mouse on the shortcut icon located on the desktop. In the line name "Target" add to the target location the following handle: << /ADBTES<>> and close the dialogue box by left clicking on **OK**.

Do the same for the shortcut in the Programs menu of the Windows menu

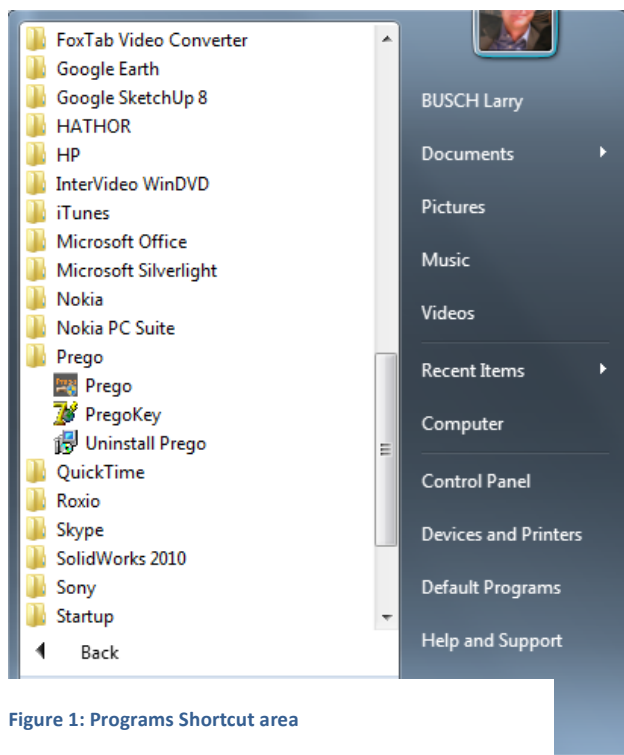


Figure 1: Programs Shortcut area

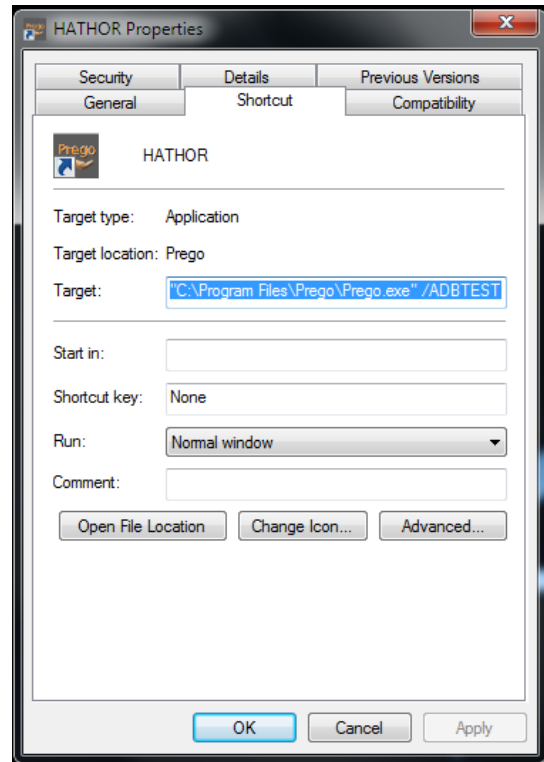

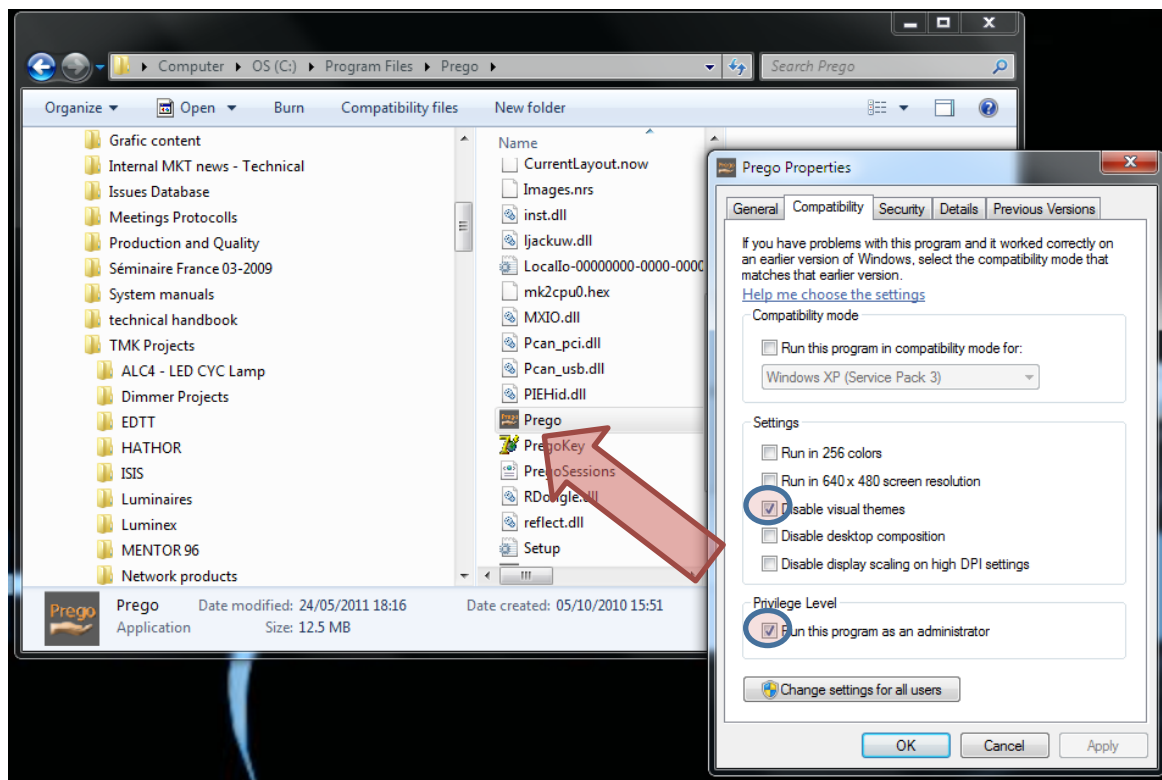


Figure 2: Change the target line as in the example.

THE FOLLOWING STEP IS ONLY NECESSARY IF YOU ARE RUNNING A SYSTEM UNDER WINDOWS 7

The configuration mentioned below is intended to enhance the operational behaviour of the HATHOR software and is not mandatory setup procedure. We have found out though that the speed of operation and the screen display improve on certain machines and operating system configurations.

Go to your Windows explorer  to open your C: Drive and the programs folder. There look for the location of the PREGO software – typically to found at: C:\Program Files\Prego

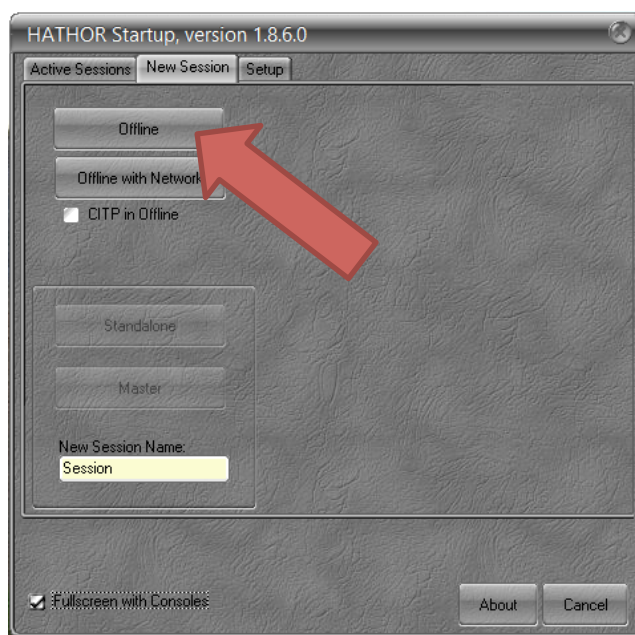


Right click on the Prego program file and choose file properties. This is the lowest menu item you can choose – and click on the compatibility tab. Click to disable visual themes and run the program as an administrator. This may make the reaction of the program much quicker.

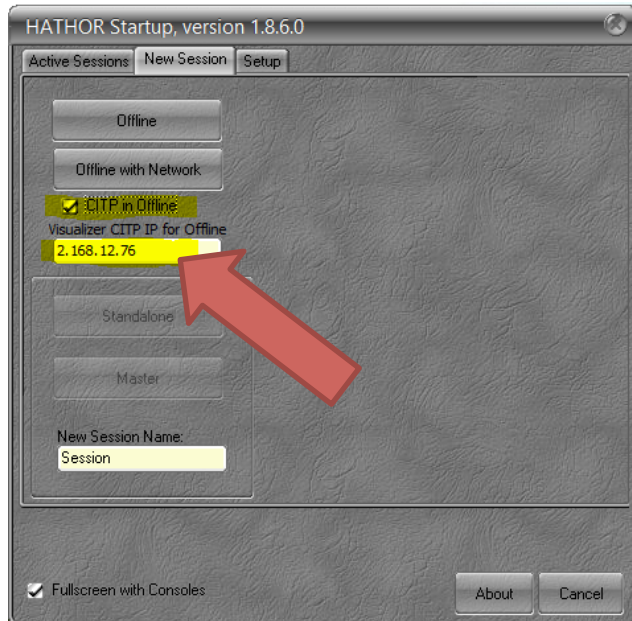
RUNNING THE HATHOR OFFLINE SOFTWARE FOR THE FIRST TIME

Save any data other programs may be using at the moment, the best would be to close any running applications and click on the shortcut link on the desktop. The HATHOR program will now start. There may be a short notification that the program is making changes – this is normal and shall be allowed. You will then receive the following menu box, if not click on the tab “New Session”.

In the “New Session” tab click on the button “Offline” and the HATHOR software will start immediately.
This must be done every time you start the offline software.



If you want to connect visualizer software thru the CITP protocol, please check mark [x] CITP in Offline. Please fill-in the IP number of the Host computer where the visualizer is running on.



IMPORTANT:

When you start the HATHOR software for the first time, there will be no show or any screen configuration installed. The screen is totally blank and only the “HATHOR” menu in the top left corner of the screen is active.

As you have learned during your training setup first your screen configurations and menu items. Or better load a show and your favourite screen setup to get started. You may even start to prepare a library of the venue your work in, the available instruments etc...

Remember the HATHOR software can be completely personalized to adapt to your style and preferences of operating.