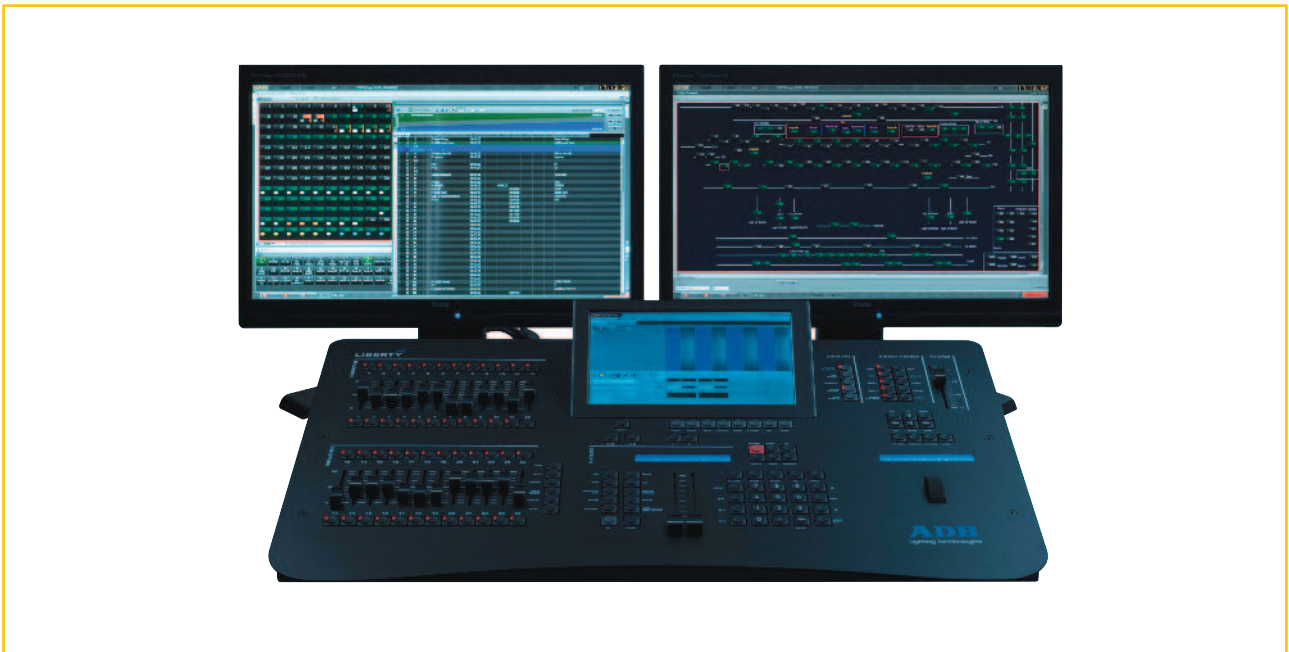


LIBERTY

Lighting Control Desk



“...IT’S ONLY THE START OF A REVOLUTION”

LIBERTY is the spot-on solution for space-challenging environments and all venues seeking a fully integrated solution in a highly compact and portable package with the capacity of much larger and more expensive lighting consoles.

The control desk software (which is common with the FREEDOM console) itself has been developed with the requirements of modern lighting design in mind, including a Moving Light library, with over 5900 fixtures. The lighting control desk philosophy has been specifically designed for theatre stage lighting without any compromise. As an operator it is easy to advance from a LIBERTY console to other members of the HATHOR software powered lighting control desk family thanks to the highly intuitive operating interface.

The heart of the unit is driven by a dual core processor with multiple graphical screens and running under the recent embedded version of Windows OS. This design offers unrivalled performance and reliability, as well as the flexibility to incorporate the software drivers for the latest peripheral devices. The lighting console exchanges among other protocols with standard ASCII show files. The operator may freely configure the screen layout and tailor the user interface to their personal needs and preferences.

LIBERTY is available in five basic configurations controlling channel numbering from 120 to 1024 multi-parameter lighting instruments and can address up to 16 universes via suitable networks. Synchronised passive backup feature is integrated in the system. LIBERTY consoles perform as standalone or as a backup/client desk in an extended network system. Networked LIBERTY and FREEDOM consoles will support multi-user / multi-operator setups with optional software packages.

LIBERTY comes with an SSD disk drive, which makes the console extremely silent and improves the boot-up time.

LIBERTY

Software Features

Channels

- 8192 outputs / parameters.
- 120/240/360/512/1024 control channels (multi-parameter lighting instruments) such as LED fixtures, Moving Lights, Video Servers, Smoke Machines etc... (Retrofit upgrade of channel count possible by optional upgrade kits).

Available Control Protocols

ArtNET, Sandnet, Pathport, sACN, and many others.

- RDM ready
- ACN E1.31 ready

Specifications

- 1024 DMX - outputs (on 2 physical XLR5F connectors)
- 16 adressable (DMX) universes; up to 8192 parameters via ETHERNET.
- 2000 groups
- 15000 presets (cues)
- 1000 looks
- 24 playbacks
- 1000 sequences (cue lists)
- Individual special timed transitions for each parameter
- 1000 chasers
- 1000 effect templates
- 100 dimmer curves
- 1000 gel strings
- 16000 palettes (2000 palettes/attribute group)
- 7 attribute groups
- 100 instruments layouts
- 192 virtual submasters (assignable in banks to physical faders)
- 1000 submasters pages
- Virtuality unlimited screen's user layouts (stored to hard drive of control desk)
- 100 panels

Operational Features

- RPN (Reverse Polish Notation) and "AT"-Mode style user input selectable.
- Graphical User interface with 2D views (Channel's layouts) which let the operator working directly on the light plot, with selection options (full mouse support, with extensive and intuitive use of drag'n drop and local menus).
- Track Window allows editing of cues via Editor for Instrument parameters and intensities. Times and values can be edited, by numeric entry or by using dropdown menus. Tracking of all referenced objects such as Presets, Palettes, Groups, color frames and recorded Fader playbacks over the whole show.
- Instrument Window :
 - o Channels as Instruments, combining one or several types of devices such as dimmers, color changers, yokes and moving lights into one single Instrument.
 - o Graphical device and dimmer patch with user definable curves.
 - o Channel and Dimmer Live Test.
- Cues organization by Free Sequence using Presets as reference, or Cue List.
- Drag'n drop facilities to copy/paste or move steps (cues) in the sequence.
- Each step (cue) can be edited Live or Blind, channel by channel and parameter by parameter for values and crossfade times.
- Attribute recordings as independent objects in the sequence.
- Time line representation and editing of timed transitions.

- Submasters
 - o Rubberband functionality and Auto-execute look functionality for parameter control through faders.
 - o Fader content and play-backs can be recorded in the sequence.
- 7 basic Palette Attribute's Groups as : Focus, Color, Beam, Pattern, Extra, All, Dynamics.
- Reference Palettes and No reference Palettes.
- Recording possibilities : Direct or Drag'n drop / Filters.
- Palettes fully editable.
- Tracking mode or non-tracking mode for intensity modification in a Cue, defined by user.
- Tracking mode for fixture's parameters with history background, editing and clean-up functions.
- Extensive Factory Template Library as well as user definable templates with 16 bit resolution for any parameter and intensities.
- Complete Template builder included, with direct access and live template modifications and check.
- Copy Attributes command to copy parameter's data from one luminaire to others of the same type.
- Fetch Position command to copy parameter's data from one cue in the list to stage for a selection of devices.
- Fetch command to copy intensity's data from one cue in the list to stage for a selection of channels.
- Replace Fixture function to exchange one device for another one of different type.
- Play (show) browser allowing offline browsing and editing of shows not currently loaded.

Colour Scroller Tools

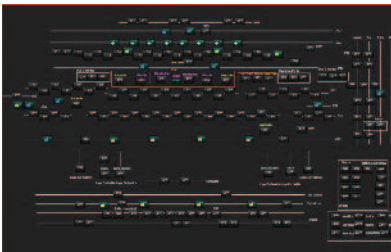
- Gel strings builder with colour filters images and manufacturer references.
- Individual frame calibration.
- Gel strings are objects you can copy, paste, move, import and export.
- Live gel string modification and check.
- Extensive gel library for onscreen display of color frame for color changers.
- Direct display of the colour frame in the channel box.
- Direct access with frame button or gel picker.

Devices Tools

- Color Picker / Gobo Picker.
- Beam tools.
- Parameter entries in % or in degrees.
- Pan invert /Tilt invert functions on input (without any consequences on show's data).
- Attributes are executed as "Move while Dark" as default by preference. The chosen behavior can be always overridden at any level while recording or editing.

LIBERTY

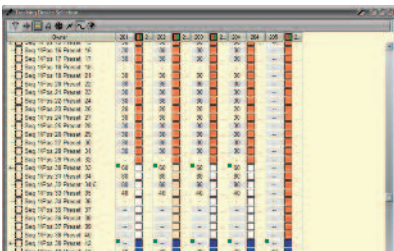
Hardware Features



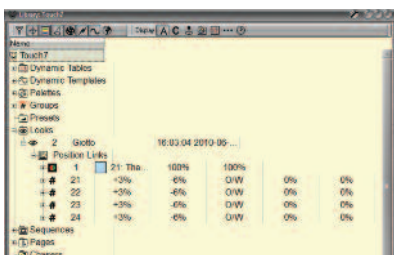
Touchscreen Topographic Layout



GEL Library



Memories edition's window



Editor of shows

Screens Layouts

- At initial system start a default screen layout organization is present. This default layout can be re-loaded at any time.
- Infinite possibilities to organize screens.
- Four sub-screens per monitor.
- Multiple windows per sub-screen.
- STORE and LOAD functions (User Layouts).
- Individual dynamic zoom of all editors and browsers.

Intuitive and Contextual Functions

- Objects such as Channels, Palettes, and Presets can be dragged and dropped from one place to another, generating very intuitive pop-up menus. Objects such as Channels, Palettes and Presets can be selected and activated directly by finger tap.

Playbacks

- 1 Grandmaster with Blackout key.
- 24 physicals Submasters with assign key and Flash key.
- Modes: Solo / Inhibit / Focusing / Rubberband & Auto-execute look.
- Loading possibilities: Channels, Groups, Presets, Looks.
- Chasers, Attributes and Palettes.
- 1 Master Playback 100 mm (Sequential Theatrical Crossfade).
- GO / GO BACK / PAUSE / Jump / SEQ- & SEQ + keys.
- 1 Intensity / Speed control wheel.

Moving Light Controls

- 4 virtual touchscreen sliders located on the central 10.1" LED Touchscreen.

Keypad

- Status information LCD.
- Channel selection: +, -, Thru, +%, -%, At Level, All and Invert commands.
- RECORD/UPDATE for Presets, Looks, Groups, and Palettes with filtered options.
- Direct Frame (Gel String Colour) key.
- Direct Numeric entry for SEQUENCE Times and Special Times.
- Direct Numeric entry for PARAMETER Times.

Integrated 10.1" LED Touchscreen

5 Dedicated keys for very quick related content display:

- SEQUENCE
- SUBMASTERS
- CHANNELS
- MOVING LIGHTS CONTROL
- UNLIMITED USER SCREEN LAYOUTS

Power Requirements

- Power supply cable: CEE22 connector
- Power supply: 50/60 Hz, 100 - 240 V, 7 A - 3.5 A

Connections

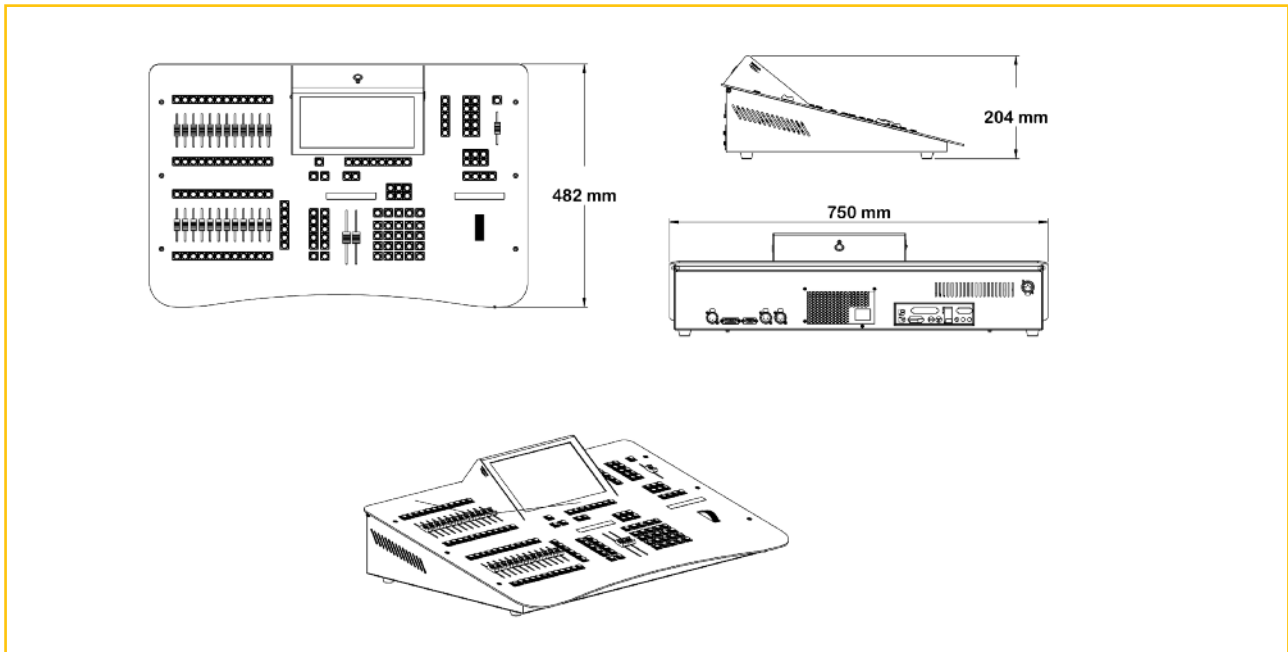
- 2 DMX512 XLR 5 pins female.
- 1 ETHERNET RJ45.
- 1 D-Sub connector – 8 external lines for remote triggering.
- 6 USB PORTS.
- 1 USB located on front panel.
- 2 Video outputs:
 - analog video output: 1 SVGA connector
 - digital video output: 1 DVI-D connector
 - 1 HDMI connector
- 1 AUDIO In XLR 3 pins female.
- 1 Desk lamp supply XLR 3 pins female: 12 V – 400 mA – 5 W.
- 1 PS2.
- 1 S.A.T.A. port.

Physical Specifications

- Dimensions: 750 x 482 x 204 mm
- Weight Console: 15 kg
- Operating temperature range: from + 5 °C to + 35 °C.
- Humidity: relative humidity not more than 95% non-condensing.

LIBERTY

Ordering Information



Description	References
<p>LIBERTY - 120 channels LIBERTY - 240 channels LIBERTY - 360 channels LIBERTY - 512 channels LIBERTY - 1024 channels</p> <p>Supplied with: alphanumerical keyboard and mouse, supply cable, dust cover and Quick Start user manual and system restore DVD.</p>	<p>LIBERTY/120 LIBERTY/240 LIBERTY/360 LIBERTY/512 LIBERTY/1024</p>
<p>Hardware Options and Accessories</p> <p>For Channel upgrades and Networking options please contact your ADB distribution Partner</p> <ul style="list-style-type: none"> MIDI – USB adaptor 22" LCD/TFT monitor 24" LED monitor with Multi Touch Integrated XLR3 "gooseneck" desk lamp Flight case for LIBERTY consoles Flight case for 22" Touchscreen Monitor Backup for LIBERTY 120 Backup for LIBERTY 240 Backup for LIBERTY 360 Backup for LIBERTY 512 Backup for LIBERTY 1024 Wireless Remote control unit 24-Subfader Extension External Power Supply Extension 1.50 m cable 	<ul style="list-style-type: none"> MIDI/USB LCD22 LED24/HAT WORKLITE/XLR3 FLY/L FLY/M/L RPU/120 RPU/240 RPU/360 RPU/512 RPU/1024 WIFI/FULL/HAT SU B24/EXT/H EPS/9 DB15/1

DS-1243-E-01r Subject to modifications