

Motorised WARD

Motorised Zoom Profile for Theatres, Concert Halls, TV Studios



The Magic of the Rings...

ADB
Lighting Technologies

The Secrets of the Rings...

Shapes

360° endless rotation capability of gobos and each individual shutter blade, allowing the creation of shapes which are impossible with any other profile.

Precision

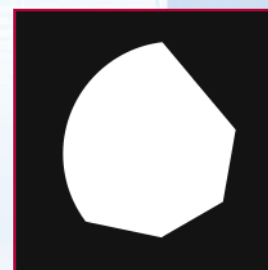
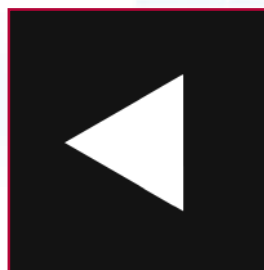
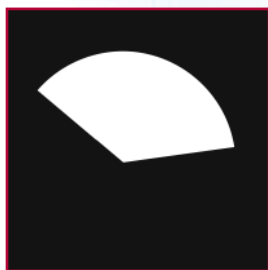
Unequaled precision for the control of each function thanks to a 16-bit resolution. For example, pan & tilt can be positioned and repositioned with an accuracy better than 0.1°, and shutter control precision is second to none for a motorised fixture.

No Reset

No need for long and noisy reset sequences, for example after a power OFF, as the result of **WARD/M** using absolute sensors for detecting its position.

All-in-one

All-in-one remote control of all spotlight functions, i.e. shutters, iris, gobos, zoom and focus. Therefore no need to swap specific motorisation modules depending on required functions.



The Silence of the Rings...

Superior optical Performance

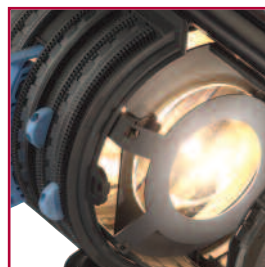
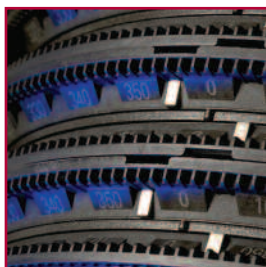
Exceptional light output, for example 3,900 lux measured at 10 m with 12° field angle and an 800W halogen lamp. The automated and the manual **WARD** spotlights feature identical photometric characteristics, thus allowing homogenous lighting whenever both versions coexist in a rig, and perfect colour matching when colour changers are used. In addition the user has the choice between two zoom ranges, 12°-30° and 22°-50°.

Remote Control via DMX512 or Ethernet

WARD/M is controlled via DMX512 or Ethernet (ArtNet) protocol, and is ACN and RDM ready. Data and 24V DC output provided on XLR4 for scroller or other DMX device.

No Fans = No Noise

No fans is the first condition for a truly silent operation. **WARD/M** has no fans. This, added to the use of low noise motors, teflon coating of several critical parts and high precision mechanics, makes of **WARD/M** the most silent automated light ever built.



The Intelligence of the Rings...

Setup via Internet Browser

Programming and editing can be performed via a standard PC with an ordinary Web browser. All features are formatted as Web pages, so no additional control software is required.

Feedback

WARD/M provides an overview of all parameters and features on its Web pages. WARD/M feedback includes positioning of pan and tilt, lamp status, error messages... and more.

Scanner

WARD/M Scanner software helps locating all the WARD/M units on the network. Scanner functions include uploading software and direct links to each WARD/M Web page. The Scanner provides also an overview of all WARD/M units, for example IP address, name and software version.

Ethernet Node

WARD/M provides the gateway for transferring DMX512 data from ArtNet/Ethernet. In fact each WARD/M includes an Ethernet Node. DMX allows daisy-chaining of multiple WARD/M units, so an installation can be a combination of Ethernet and DMX protocols.

Motorisation of Physical Limits

WARD/M has the capacity of learning and memorising its physical limits when hindered by any obstacle.



The screenshot shows a web browser window titled "WARD/M Axes configuration - Microsoft Internet Explorer". The address bar shows "http://12.0.0.134/cgi-bin/setdmx.cgi?dmxpage=axes.html". The main content area features the "WARD" logo in a stylized font, the "ADB Lighting Technologies" logo, and the heading "Axes configuration". Below this is a navigation menu with links: Home, DMX, ArtNet, Info, Axes, Lamp, Update, Misc, Reset, Calibration. A "Refresh this information" link is also present. The main configuration area is a table with columns for "Function", "Present status", and "Click to change; then Refresh".

Function	Present status	Click to change; then Refresh
Global wheel mode	Normal speed	<input type="button" value="Normal speed"/> <input type="button" value="Quiet mode"/> <input type="button" value="Stealth mode"/>
Pan & Tilt	Normal	<input type="button" value="Normal"/> <input type="button" value="Swapped"/>

The Light of the Rings...

Photometric Data

WARD/M 12° - 30°				WARD/M 22° - 50°			
10	15	20	25	At min. angle			
2.6	3.9	5.3	6.6	Distance (m)	8	10	14
3900	1733	975	624	Field Ø (m)	3.5	4.4	6.2
				Illumination (lux)	2500	1600	816
				At max. angle			
5	8	11	14	Distance (m)	3	5	7
2.7	4.3	5.9	7.5	Field Ø (m)	2.7	4.5	6.2
3960	1547	818	505	Illumination (lux)	4388	1580	806
							488

* Typical values measured at 230 V with a 800 W / 20,000 lm lamp

including:

- 1 motorized yoke mounted on a control box
- 1 WARP/12-30 or /22-50 spotlight mounted into the yoke with attached motorization unit
- 1.6 m power supply cable connected to the top box via a twist-lock connector and with open ends on the other side

Reference

WARD Motorised Zoom Profile Spotlight 12° - 30° / 230 V
 WARD Motorised Zoom Profile Spotlight 22° - 50° / 230 V
 WARD Motorised Zoom Profile Spotlight 12° - 30° / 90 - 264 V
 WARD Motorised Zoom Profile Spotlight 22° - 50° / 90 - 264 V

WARD/M/12-30
 WARD/M/22-50
 WARD/M/12-30/U
 WARD/M/22-50/U

Accessories

Metal filter frame (185 x 185 mm)
 Safety grid (185 x 185 mm)
 Double gobo holder (rotating) type B
 Combined iris diaphragm & gobo holder (rotating) type B
 Single gobo holder (non rotating) for WARP type B
 Flight case for WARP/M
 Hook clamp for WARP/M (2 required)
 1.2 m spotlight safety cable

PFM/185
 GR/185
 SP/2GO/WARP
 SP/OR-GO/WARP
 SP-GO/WARP
 FLY/WARP/M1
 A40
 CAS 120/N
 CC/WARP

Colour changer for WARP

supplied with :

- 1 16-colour gel filter roll
- 1 adapter plate (APL-CC/WARP)
- 1 DMX/supply cable

Adapter plate for colour changer

APL-CC/WARP

Lamps

G9.5 axial, biplane filament, halogen lamp 230V-800W-3200K-300h
 G9.5 axial, biplane filament, halogen lamp 230V-600W-3200K-300h

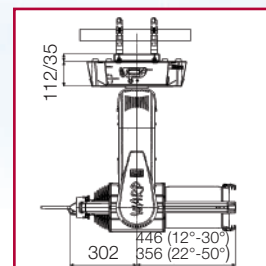
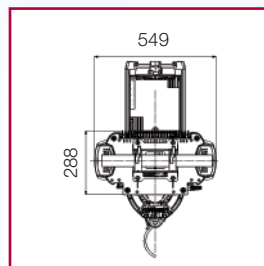
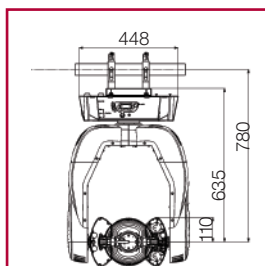
800W/G9.5/3200K
 600W/G9.5/3200K

* Warning: "WARD halogen spotlights are exclusively designed for a biplane filament halogen lamp with a G9.5 base. Any modification to accommodate another lamp is not allowed and would void CE safety approval and product warranty"

Weight

WARD/M/12-30: 32 kg
 WARD/M/22-50: 32 kg

Dimensions (mm)



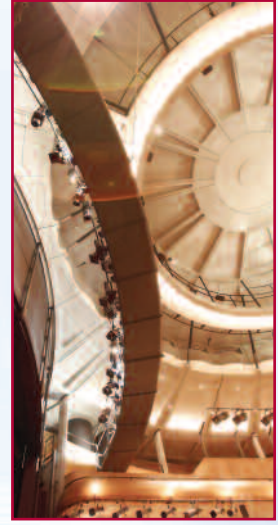
The Success of the Rings...



Shanghai, Oriental Arts Centre



Shanghai, The main concert hall, one of three ADB-equipped venues in the complex



UK, Glyndebourne Opera House

"I did a luminaire shootout with several leading brands including the **WARD/M** – and at the end of the day the **WARD/M** came up trumps. It is totally silent and is as bright, if not brighter than the competition. The fact that you can network them is fantastic, as is the way the **WARD/M** moves onto the controls on our consoles, and the way the shutters work is really user-friendly."

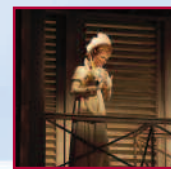
Keith Benson, Lighting Manager, Glyndebourne Opera House, UK

"The general principle of a motorised profile is that it can replace a number of fixed position profiles – but the Motorised **WARD**'s specific advantage for venues like this is that it can be used very effectively during live performances, even in a critical acoustic environment, because of its silent operation. Numerous qualities including low noise, light output, accuracy, repeatability of shutters and luminaire positioning and the Ethernet capabilities put it way ahead of the competition."

Bob Peill, LSi Projects, UK

"This award is presented every two years by the SHOWTECH organizers in conjunction with the German Association of Theatre Professionals (DTHG). It is intended to reward innovation, functionality and design, among other criteria. The Jury decision for the **WARD/M** was unanimous. Besides the silent operation and the very accurate repositioning, the highly elaborated remote control capabilities, in particular the Web based programming, were highly praised."

SHOWTECH Product Award (Lighting & Projection Technology category)



UK - 'Otello' at Glyndebourne: Lighting Design by Mark Henderson

ADB - Your Partner for Light

Belgium N.V. ADB-TTV Technologies S.A.

(Group Headquarters) Leuvensesteenweg 585, B-1930 Zaventem
Tel : +32.2.709.32.11, Fax : +32.2.709.32.80, E-Mail : adb@adblighting.com

France ADB S.A.S.

Sales Office: 92, Avenue Jean Jaurès F-92120 Montrouge
Tel : +33.1.41.17.48.50, Fax : +33.1.42.53.54.76, E-Mail : adb.fr@adblighting.com

Factory & Group Logistics Centre: Zone industrielle Rouvroy F-02100 Saint-Quentin
Tel : +33.3.23.06.35.70, Fax : +33.3.23.67.66.56, E-Mail : adb.fr@adblighting.com

ADB
Lighting Technologies